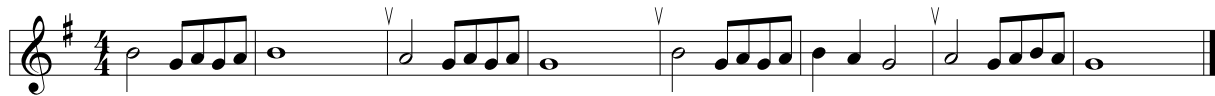


初中 音樂新編

牧童笛練習

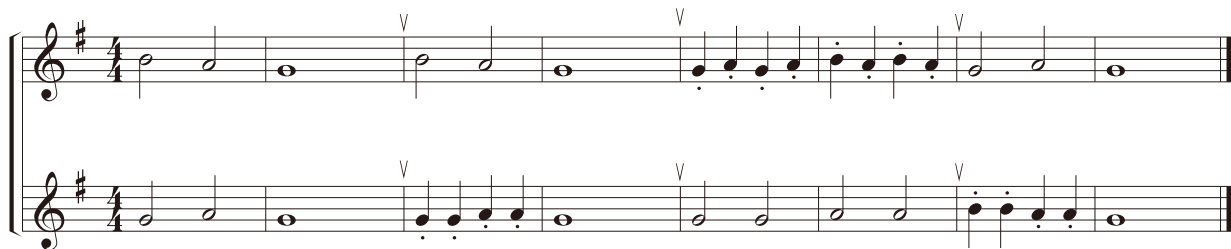
歌曲 1 (音域 : G - B)



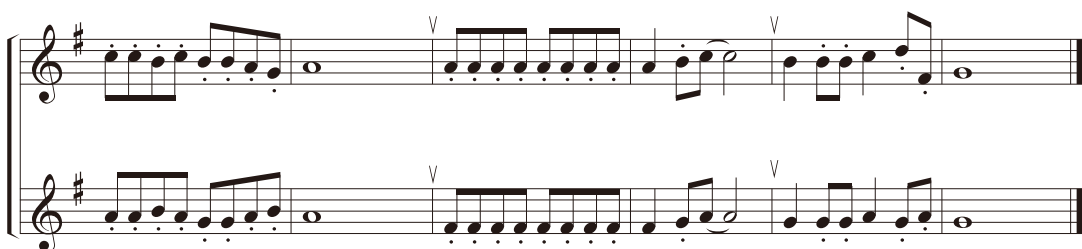
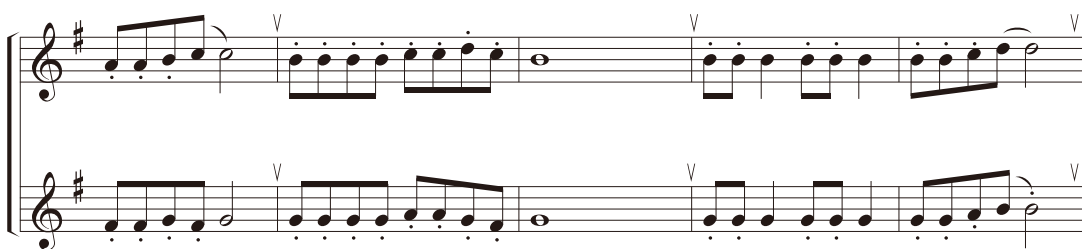
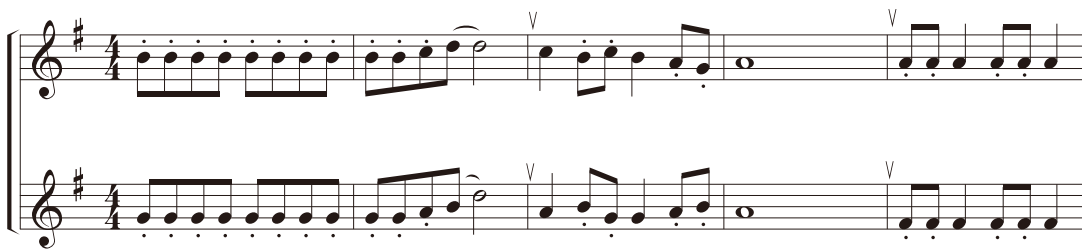
歌曲 2 (音域 : G - B)



歌曲 3 (音域 : G - B)



歌曲 4 (音域 : G - D', 包括新指法 F#)



初中 音樂新編

牧童笛練習

歌曲 5 : *Are You Sleeping* (三部輪奏) (音域 : G - E')

Musical notation for 'Are You Sleeping' in G major, 2/4 time. The piece is a three-part round. The first part starts with a treble clef, a key signature of one sharp (F#), and a 2/4 time signature. It consists of two staves. The first staff has a melody starting on G4, with notes G4, A4, B4, A4, G4, F#4, E4, D4, C4, B3, A3, G3. The second staff has a melody starting on G3, with notes G3, A3, B3, A3, G3, F#3, E3, D3, C3, B2, A2, G2. Both staves have a 'V' (breath mark) above the first note of each measure. The first measure of the first staff is marked with a circled '1', and the first measure of the second staff is marked with a circled '3'. The second measure of the first staff is marked with a circled '2', and the second measure of the second staff is marked with a circled '4'.

歌曲 6 : *My Grandfather's Clock* (音域 : D - D')

Musical notation for 'My Grandfather's Clock' in G major, 4/4 time. The piece consists of four staves. The first staff has a melody starting on D4, with notes D4, E4, F#4, G4, A4, B4, A4, G4, F#4, E4, D4, C4, B3, A3, G3. The second staff has a melody starting on D3, with notes D3, E3, F#3, G3, A3, B3, A3, G3, F#3, E3, D3, C3, B2, A2, G2. The third staff has a melody starting on D4, with notes D4, E4, F#4, G4, A4, B4, A4, G4, F#4, E4, D4, C4, B3, A3, G3. The fourth staff has a melody starting on D3, with notes D3, E3, F#3, G3, A3, B3, A3, G3, F#3, E3, D3, C3, B2, A2, G2. Both staves have a 'V' (breath mark) above the first note of each measure. The first measure of the first staff is marked with a circled '1', and the first measure of the second staff is marked with a circled '3'. The second measure of the first staff is marked with a circled '2', and the second measure of the second staff is marked with a circled '4'. There are two triplets in the fourth staff, each marked with a circled '3'.

初中 音樂新編

牧童笛練習

歌曲 7：《櫻桃小丸子》主題曲《問題天天都多》（音域：D-E'）

曲：織田哲郎

Musical score for '問題天天都多' (Problem Every Day) in G major, 4/4 time. The score consists of seven staves of music. The melody is written in treble clef with a key signature of one sharp (F#). The music features a mix of eighth and sixteenth notes, often beamed together, with some rests. There are several 'v' marks above the notes, likely indicating breath marks for a flute. The piece ends with a double bar line.

歌曲 8：Eine Kleine Nacht Musik（第二樂章）（音域：C-C'）

Musical score for 'Eine Kleine Nacht Musik (第二樂章)' in C major, 4/4 time. The score consists of three systems of two staves each. The melody is written in treble clef with a key signature of no sharps or flats. The music features a mix of eighth and sixteenth notes, often beamed together, with some rests. There are several 'v' marks above the notes, likely indicating breath marks for a flute. The piece ends with a double bar line.

初中 音樂新編

牧童笛練習

歌曲 9 : *Morning Has Broken* (音域 : C - D')

Musical notation for 'Morning Has Broken' in 3/4 time, featuring a treble clef and a key signature of one flat. The melody is written across three staves with various note values, rests, and phrasing slurs. A 'v' marking is present above the first staff.

歌曲 10 : 《虹彩妹妹》 (音域 : C - D')

Musical notation for '虹彩妹妹' in 4/4 time, featuring a treble clef and a key signature of one flat. The melody is written across two staves with various note values, rests, and phrasing slurs. 'v' markings are present above the first and second staves.